



6 - 12 April 2019

Parachilna to Laura

'Prairie to the Dairy'

25th Anniversary Event

Platinum Sponsor

Jarvis Toyota



Event Manual 2019

Gold Sponsors



RAMSEY BROS
PARTNERING FARMERS SINCE 1950

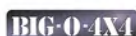


Tim Adams
CLARE VALLEY



MR. MICK

Silver Sponsors



Variety - the Children's Charity enriches the lives of South Australian children who are sick, disadvantaged or have special needs by providing practical equipment and programs.

Parachilna to Laura

'Prairie to the Dairy'

25th Anniversary Event

Event Route 2019

Day 1: Starting from the small Flinders Ranges township of Parachilna, on the side of the Leigh Creek to Port Augusta railway, the event will be heading south to Moralana, a property managed by Tom and Rhiannon Smart.

Initially we will be covering some wonderfully hilly terrain with views over Lake Torrens before we travel closer to the lake and transverse some of the creek beds on the property.

We then head back to Parachilna to enjoy the atmosphere of the Prairie Hotel and our hosts Jane and Ross Fargher, with a night of wonderful entertainment and the chance to reacquire with old friends and the chance to make new ones. We will have the opportunity to mix with many of the locals who have assisted to put this wonderful event together.

Day 2: Heading North from Parachilna we pass through the township of Beltana, a small but very quaint town and then travel through Sliding Rock. Sliding Rock was originally a mining town which focused on copper before its final days providing water to Leigh Creek.

From there we head to Warraweena, run by Stony & Gina Steiner. Once one of the homes of Operation Flinders, who actually put on lunch for the BASH in 2005, it is has been a popular location for 4WD drivers for many years.

And you will find out why! We head to Mt Gill, where you will almost be able to see the entire world from the summit. It is so high, steep and small that we will have to arrange for the entrants to go up in groups. And when you get there the views are breathtaking and we are certain the cameras and phones will be out in force taking some wonderful shots of the views on offer.

This is one of the more challenging tracks on the event, with rocky and tight tracks, steep ascents and even steeper descents, it will require slow and

cautious driving.

Once you arrive at the end of the day, you will appreciate the calm of the evening and a chance to learn about the night sky and what the stars have to offer!

Day 3: Heading north out of Warraweena, we head to Copley and Leigh Creek and the chance to refuel. We then head east to Yankannina, the current home of Operation Flinders at Owiendana Station.

There will be an opportunity in the afternoon for the more adventurous of you to try your hand at abseiling under the guidance of suitably trained instructors. For those less daring, you will be able to enjoy some refreshments and watch those dangling off ropes from a vantage point at the bottom.

We then head to the Sutherland Talisker Chimney for our night stop.

Day 4: Again heading east, we travel through the fantastic Gammon Ranges travelling along the Wortupa Ring Road and have a chance to visit Grindell Hut. We head to Balanoona, next to the National Parks Headquarters for another wonderful lunch.

An easy afternoon travelling past Blinman, well for those who can resist slipping into the Blinman Hotel for 'one off the wood', we head to Ikara. We do divert to Alpana Station and the chance to again visit the wonderful and scenic Blinman Pools, courtesy of Sally & David Henery. Hopefully you can enjoy swimming in the sensationally clear water and a dive or two from the adjacent rock walls.

At Ikara, also known as Wilpena Pound, we provide a night's accommodation and a chance for the entrants



to leave their tents and swags on the roofs of their 4WDs.

Day 5: A quick drive to Hawker to refuel, we head to the west of the Wyacca Range and Mount Arden, and travel to Wilkatana, a property that has been run for many years by Tom & Rachel Smart. We again see the Leigh Creek to Port August Railway.

We will be enjoying lunch at the shearer's quarters, but not before heading to the edge of Lake Torrens and across some salt flats.

After lunch we head east through Thompson's Gap, on a trail that had never had a 4WD travel across it until the initial 4WD Adventure survey. What you will be travelling on is a fire track and this opportunity is only available due to the generosity of the Smarts. This is an outstanding track, and this area was considered for a movie set about Afghanistan but they were unable to get the equipment in.

The views are truly spectacular, which will include those of The Dutchmens Stern, from a viewpoint few will ever get to see. We even have a 'hill climb' challenge for those who want to test their courage, and the opportunity for spectators to watch on.

Through Quorn we head for our overnight stop at Saltia, with some special plans for dinner.

Day 6: From Saltia we do an easy drive to the start of the Hungry Ranges. We plan on heading along the Ridge Top Track & Quartz Gorge travelling through Lynch's Park to Ekes Peak Lookout before heading for a wonderful night in this magnificent location via Sandy Bore and The Springs. We thank the Cook family, owners of Bendleby Homestead, for their assistance.

Day 7: Our final day will still be full of adventure and challenges as we travel through the Bendleby Ranges on a great mix of tracks which could potentially include Link Track, Gum Creek Drive, North South Ridge and Kokada Trail before heading south and head to our final check in at Golden North at Laura.

We then head onto Clare to our final night's accommodation, with a wonderful experience of having our final dinner with our hosts Tim Adams and Pam Goldsack.

**What are you waiting for?
Register today at variety.org.au!**





Fundraising:

There's no better reward for your fundraising than the smile's on the faces of kids who are sick, disadvantaged or have special needs. The 4WD Adventure itself is a pretty good incentive, too!

All entrants share the responsibility of the final fundraising result and we encourage you to get behind each other's fundraising efforts or hold your own event.

It's not as hard as you might think, extends the camaraderie of the Adventure well beyond the 7 days and can serve as a great business and networking opportunity. Besides the simple fact that it is fun and every dollar raised go directly to kids in need.

Here's some great fundraising ideas to get you started:

Seek Sponsors For Your 4WD

For the purpose of your entry to the 4WD Adventure, a sponsor is any person or business making a donation to Variety – the Children's Charity of South Australia on behalf of your vehicle entry.

- Tax-deductible receipts will be issued by Variety – the Children's Charity of South Australia for any donation over \$2.
- Receipts will only be issued for cash donations, not in kind or product donations.
- Variety can't offer your sponsors any promotional or recognition benefits, but we strongly urge you to thank, promote and appreciate the individuals and businesses who have supported you.

Share Your Online Fundraising Page With Everyone You Know Via E-mail And Social Media

Sharing your online fundraising page is a quick, easy and effective way to raise funds. Family and friends around the world can support you.

- When you register for the 4WD Adventure, request information on how to set up an Everyday Hero fundraising page linked to Variety.
- Once set up, your team page will have its own link which you can forward to your email and SMS contacts and share on Facebook and other social media platforms.
- Every time an online donation is made, your donor will get an automatic tax receipt and you will receive a notification.

Organise Fundraising Events And Activities, Or Support Others By Attending

Fundraising activities are broad in their definition and can include running a BBQ at the local hardware store, running a charity golf day or organising a fundraising lunch or dinner.

- All fundraising events and activities need to be registered with Variety by completing the form from the Variety office. An official authority to fundraise letter will be issued once you have registered your details.
- You can use the Variety 4WD Adventure logo with the wording "proudly supporting" and your vehicle number with Variety's approval.
- Donations can't be used for anything relating to your entry to the event such as provisions payments or fuel. These are personal expenses to be covered by the participants in each team.
- All fundraising events and activities must adhere to Variety's Fundraising Terms and Conditions.

More Fundraising Opportunities

Variety will endeavour to present fundraising opportunities where possible from our corporate partners, some previous examples have included Woolworths stores, Sky City and Adelaide 500.

Templates, Fact Sheets, Presentations And Kits:

We have an array of tools to help you make your sponsorship pitch to businesses and organisations you identify as potential supporters. These tools include:

- A sponsorship template you can modify to include information about your team and what you have to offer.
- A PowerPoint presentation you can use if you have to make any kind of presentation to an organisation or business.
- A fact sheet which details Variety – the Children's Charity's facts, such as who we are and where the money goes.
- Links to videos about Variety and the kids we help.
- Workplace giving kits that will allow you to provide information to your employer or companies who may be interested in having their employees support the cause.
- By signing up your organisation's employees to Variety's Workplace Giving Program, donations received from organisations and individuals can be attributed to a 4WD vehicle, not only helping the car's fundraising tally but helping kids in need in SA.





Vehicle Preparation:

To ensure your vehicle meets the Adventure requirements, it will need to have high and low range, quality, all terrain light truck tyres and a UHF radio fitted to the vehicle. Most 4WD's are ready to go off the showroom floor.

Vehicle Requirements

To ensure your new vehicle is suitable, Variety recommends the following modifications as a minimum.

- All terrain tyres with a minimum 40% tread left
- Two spare tyres; one fitted to a rim, the other can be the rubber tyre only
- Tyre pressure monitors are highly recommended
- UHF radio with an external aerial installed (Handheld radios are not suitable for this event)
- Adequate rated recovery points on the front and rear of the vehicle.
- Two sets of car keys

Please ensure your mechanic/dealer checks your vehicle thoroughly including brakes, suspension and wheel bearing, wheel alignment and they are aware of the upcoming trip.

- Pre-trip service and inspection
- Two spare air filters and cabin filters to suit vehicle
- Common spare parts as your experience dictates



Vehicle And Recovery Equipment

No vehicle will be permitted to attend the event unless it has rated recovery points fitted to the front and rear of the vehicle and Variety has on record that there has been an inspection by an appropriated person to verify compliance.

- 9000kg Snatch strap and two 4700kg bow shackles
- Recovery tracks (Maxtraxs or similar)
- Shovel
- Tyre pressure gauge
- Fire extinguisher
- First aid kit
- Air compressor, however you may choose to pre-arrange to share with another entrant.
- Sand flags & rotating dust lights are highly recommended



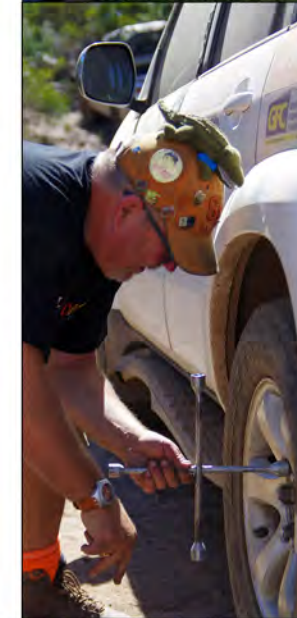
Daily Vehicle Inspection

Your vehicle is the responsibility of the driver and not MR1 (Mobile Retrieval 1) to ensure it is in good working order. Please check the following items each day:

- Check all fluid levels, belts and hoses
- Check your air filter daily as these are a major concern when driving in convoy
- Check your cabin filter
- Look over tyres including the inside and outside tyre wall
- Use a small groundsheet and check under the vehicle for leaks, dents and build-up of grass or mud
- It is recommended to replace the air filter during the trip and before departing for home
- Andrew in MR1 is happy to run through the list if you are unsure what to look for

Tyre Pressures - advice from MT1 (Mobile Tyres 1) Mike & Daniel

On the event, don't forget, if you have punctures etc. during the day, the MT1 team will be ready when you arrive at camp that night to mend your tyres but please drop your tyres off as soon as you arrive. We do like Mike and Daniel to have dinner before dawn.



Tyre Pressure Recommendations

Don't forget to take two spare tyres and an air compressor to change the pressure in your tyres.

- Normal highway pressure is 40psi then:
- Fast gravel roads 28 - 30psi
- Limestone/Rocky country 20-25psi
- Beach and sand dunes 15psi

Important Event Dates

2019 4WD Event Launch
20 September 2018

2018 Melbourne Cup Luncheon
Tuesday 6 November 2018

2019 Annual Themed Ball
TBC June 2019

4WD Orientation Day
Sunday 17 February 2019

4WD Entrant Briefing Night
Wednesday 27 March 2019

4WD Event Reunion
TBC





The Event:

Camping, Equipment And Clothing

Don't forget to pack the following:

- Tent and swag/mattress
- Camping stretcher is a popular addition
- Pillows
- Table and chairs
- Torch and a table lantern
- Shovel & toilet paper (during day)
- Shade awning
- Drinking glasses (wine or others)
- Coffee mug for morning teas (no disposable cups this year)
- Drinks & nibbles (alcohol, cheeses, crackers, snacks etc.)
- 10L of drinking water per person
- Phone/camera - batteries & charger
- Rubbish bags **IMPORTANT: On the event please clean up your rubbish in bags and dispose in the rubbish trailer. Do not put loose rubbish into the trailer*
- Hat
- Sunscreen and mozzie repellent - IMPORTANT
- Wet weather jacket and warm jacket
- Theme day outfit
- Casual attire for final night
- Spare medication requirements
- Ear plugs



Catering

Variety is privileged to have the talented CAT team, lead by Steve "Cookie" Cooling, travel and cater for the event along with some fantastic local restaurants and community groups.

All meals are provided as part of your participation fee and include breakfast from day 1, morning tea, lunch, sunsets nibbles and dinner.

Please ensure you have completed the dietary form and our chefs will do their best to accommodate all special requests.

If you have a dietary requirement, the process is to make yourself known to the kitchen team or waiting staff to ensure you receive a suitable meal.

Meal Times

Times will be announced at the morning briefing and at check in each day. These vary depending on the days route and you should make yourself aware of these times.

When our CAT team is catering, you will need to bring the following to the million star dining room for dinner and breakfast (Please set this up as soon as you arrive at camp):

- Table and chairs
- Lantern
- Wine glasses/ coffee mugs and your own drinks

Morning tea is provided on the track each day. Please ensure you bring your coffee cup / water bottle to minimise our waste.



Sunset Drinks

The bar will open one hour before dinner. You will need to bring your own glasses with you. Our sincere thanks to gold sponsor Tim Adams Wines for donating the wine and to James at the Hilton Hotel for donating the beer for the sunset parties.

Ablutions And Showers

Our state of the art abluion blocks are a great investment for us but please treat them as you would your own. You must only use the toilet paper supplied, anything else will block the system.

Please speak to an official if there are any issues with any ablutions along the track so they can assist.

Showers are available when you arrive at camp each day until around 10pm. You will be informed if showers are available in the mornings.



When you get to camp each night, have your shower then sit and have a chat with your neighbours before coming over to drinks and dinner.

During the day, you may hear the call of the woods, however please ensure you bury all toilet paper and waste using a shovel. It is unacceptable to leave toilet paper on the ground and this has been a concern of past property owners and National Parks.

Rubbish

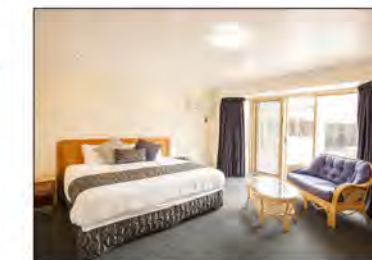
Rubbish is everyone's responsibility and we ask all entrants to pick up after themselves. Please ensure you carry rubbish bags and it would be appreciated if everyone can scout around to collect cans and bottles at the end of each night before bed.

Our SV crew provide a rubbish trailer at each night's campsite however they ask that you do not place loose items in the trailer. ALL RUBBISH IN THE TRAILER MUST BE IN BAGS.

Camping And Accommodation

The event goes to great lengths to ensure that you are comfortable in our overnight locations, with hot showers, catering and service teams. Entrants camp in the designated areas, utilising their tents, swags or roof top tents.

Mid-week and final night accommodation is provided as part of your participation fee and is twin share. From night check in, you will be directed to your accommodation reception where you will need to check in and collect your keys.



Medical

We are fortunate to have four medical doctors on the event in OV10 and OV11. If you are looking for medical assistance at night, look for the flashing light that will show you their vehicle location or find an official to give you a location if staying in accommodation.

The Doctors also have breathalysers available and are more than happy to make them available for drivers to confirm you are fit to drive.

Please ensure you bring your own medication and complete the medical form prior to the event.

If you are first on scene of an incident, please ensure your own safety first and then the safety of the patients.

Using your UHF call for an official vehicle to your location (Kilometre mark or campsite/ accommodation). This is very important as they will be able to organise medical assistance through the Codan HF radio and RAD1 (our lead communications team on the event).



Auction Items

We encourage entrants to donate auction items to include in the main auction held during the event. We would like to keep items to one item per vehicle however if you have additional auction items please discuss with the office as we are happy to make exceptions.

Auction items, where possible, need to be carried by the donor or provide the office with a high-resolution image and 1 page flyer with details of the item or voucher.

These items can not be credited to your vehicles fundraising.

If you are the successful bidder, please pay and collect your item before the reunion.



Annual Themed Ball

The Annual Themed Ball is held in mid June 2019 and is a fantastic evening full of fun, entertainment and wonderful food and beverages.

The Ball is proudly sponsored by the Adelaide Convention Centre and Variety is able to contribute \$800 towards your fundraising for every table of 10 booked and paid for by fundraising cut off for the 2019 event.



It's a great opportunity to invite new friends and family to Variety and experience what all the fun is about!



Leaving The Event Early?

Final night is when we announce our fundraising efforts, incoming chairman and celebrate the Adventure we have all been a part of!

Variety book and pay for all meals and accommodation a month before departure. If you know you are leaving early and do not require final night accommodation or meals, please let the office know, as this results in less waste and more fundraising for the kids.

Once you have notified the office a month prior, you must notify the Chairman or the Event Manager when you depart the event from a check in or check out location.

If you need to leave the event for an unforeseen circumstance, please discuss this with the Chairman or Event Manager, as they will be able to assist with plans and transport if required.





Navigation:

Driving In Convoy

In essence, this means you are responsible for the vehicle behind you. It is important that your vehicle number is visible on the windscreen, (top passenger side) and the rear window, (top drivers side). Please purchase and attach the decals before the event.

When you line up at the start or at lunch check out, check the car numbers of the vehicle in front and behind you and make a note of these. This can change a few times over a morning/afternoon as vehicles pull over for one reason or another. Once you have left the start, radio the vehicle in front confirming your number for them. If you are pulling over, advise the vehicle in front that you are doing so and let them know the number of the vehicle that was behind you.

Example: Car 99, this is Car 16, behind you, followed by your message...

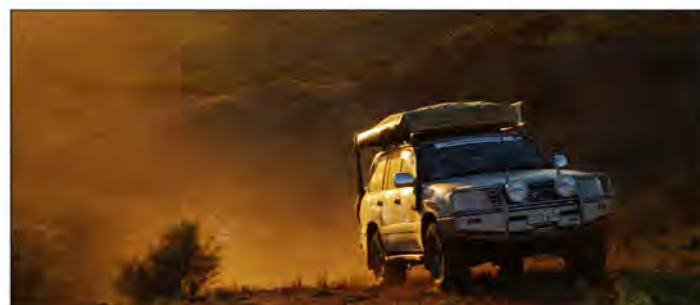
If you lose sight of the vehicle behind you, slow down a little and if they are still not within sight, use your UHF to call them.

- Always follow your route instructions, not only the car in front
- Use your indicators and drive with you headlights on
- If you need to stop on the track, check for good vision behind and in front
- Stay back out of the dust and drive to the conditions
- Announce obstacles such as oncoming traffic, cautions or difficult sections of track at your km mark eg 24.6km oncoming traffic
- In difficult terrain i.e. steep mountains, sand hills, or soft beach sand, one vehicle at a time only – call the following vehicle through by radio when you are clear
- If you become lost or disorientated, under no circumstances should you leave your vehicle, stay by your radio and the officials will find you



Radio Etiquette And UHF Radios

- A working UHF radio is required in all entrant vehicles with an installed external aerial. The external aerial should be between 3 to 5DB range and mounted on the front bull bar or roof rack. The aerial should be clear of all other obstacles including sand flags, other aerials, shovels etc.
- The UHF radio should be directly wired to the battery or an accessory power. Accessory power can be found at the cigarette lighter of your car
- The selected channel will be allocated prior to the event and announced by the Chairman. UHF radio is a common system and can be heard by others both on and off the event up to 15km away, so be polite and have fun talking to each other. Know the vehicles both behind and in front of you and keep in contact with them on a regular basis
- 2019 Adventure Uses - UHF Channel 10



Trip Meter Or Kilometre Reading

Route notes will give you an instruction at a specific kilometre point such as 1.03km. This distance is from check out and you will need to zero at the start line of each route section.

You can use your car odometer, however there are now better options available on many android and iPhones that will give you an accurate distance reading.

Download from the App store either Rally Tripmeter, RBNV Pro or one of the many apps available.

You will need to remember a charger for your phone as it will increase the battery use.

Following The Route Instructions

Please do not deviate from the route, if there is a need, please speak with an official first.

Route Instruction Legend

TR	TURN RIGHT
TL	TURN LEFT
SO	STRAIGHT ON
GR	GRID
GA	GATE
LF	LEFT FORK
RF	RIGHT FORK

The following are indicators only; your vehicle is your responsibility.

Orange or Pink Corflute with black "C"	= Caution
Orange or Pink Corflute with black "CC"	= Extreme Caution - *stop or give way
Red Ribbon	= Gate must be closed
Orange or Pink Corflute Arrow	= Disregard route instruction – follow arrows
App	= Approximate

Social Media

In the lead up and during the event, share your photos and videos with us using our dedicated hashtags on Facebook, Instagram or Twitter.

We love to share stories from our entrants, from preparation to the thrill of the Adventure. If you use the tags, we can find and share your posts with the Variety community.

Please note that all entrants must abide by our social media policy as per the event rules and regulations.

Remember we are a children's charity and if it's not appropriate for kids, then please don't think/say/do or publish it!

Be sure to like and follow our Variety SA Motoring page at:
facebook.com/varietySAMotoring

#Variety4WDAventure & #VarietySA

Check In And Out

To ensure that no one is lost during the event, our officials record your departure and arrival at Check Out and Check In. Please ensure you slow down and stop, our officials will have the route instructions and important times and information for you.

If you DO NOT go through check in at lunch or night stop. You MUST go and notify check in you have arrived or pass a message to an official as our OV's will be looking for you.



If You Get Lost?

If you have not recognised two consecutive instructions on your daily sheets PULL UP.

If you are travelling on a two-lane road turn around and go back to the last instruction on your sheet that you know was correct – look for tyre tracks from other vehicles. Reassess route instructions.

DO NOT turn around if you are travelling on narrow tracks as you may encounter oncoming traffic. Call on UHF radio, the car that was travelling in front of you. If you cannot contact them, sit tight – we will find you.



Looking After The Environment:

We know you are all aware of the following but as a gentle reminder:

Please:

- Travel only on designated tracks, avoid damage when parking at morning teas, lunches or other fun stops
- Do not damage the flora and fauna. Ensure you leave each and every area as you found it
- Please ensure you have a good supply of rubbish bags – you will need to carry your own rubbish. Place empty bottles, cans etc in a plastic bag and in the rubbish trailer
- Bury ALL toilet paper and waste along the track

Road Rules Apply... Full STOP!

Please ensure you abide by all road rules before, during and after the event, with all the vehicles wearing the Variety decals, you are representing the brand and the charity.

- Seat belts must be worn at all times
- Drive to the conditions and stay within a safe speed for your car and experience
- Drivers, it is your responsibility to ensure you are fit to drive
- Drink driving is not acceptable, if unsure it is better to check with one of our Doctors than the local policeman
- Fatigue is a large factor, break up the drive, share the driving and stay alert. Please be careful on the drive over and home



Gates: The Only Rule Is LEAVE IT AS YOU FIND IT

- *A gate with a red ribbon should never be left opened and unattended at any point in time.*
- If there is a red ribbon on a gate, you need to open the gate and if you cannot see the car behind you the gate needs to be closed. Alternatively you can wait for the car behind you to go through and hand the gate back
- Accidental Damage: If by unfortunate chance, you damage any property fences, gates or wildlife, it is imperative that you notify the nearest official so whatever problem we have can be overcome. It only becomes a problem if we don't know about it

Private Property Owners

They have been exceptionally good to us for many years and are generally very happy to have a chat – please thank them as you pass by.

Please remember that permission is granted on behalf of Variety - the Children's Charity and is only for the event. This means we trust our entrants not to return on your own holidays without obtaining permission for yourself and please respect in many situations the permission will not be granted.



GENUINE KING OFF THE ROAD

Serious adventure needs a serious 4WD. With a range of Toyota Genuine Accessories available, your new LandCruiser will pack a load and pack a punch.

Sahara model shown in Onyx Blue accessorised with Alloy Bull Bar, Driving Lights, Bonnet Protector, Weathershields, 18" Alloy Wheels and Roof Racks. All accessories sold separately.

Jarvis Toyota
1278 South Road,
Clovelly Park
T 13 0013 7766
LMVD 169915

jarvistoyota.com.au



Oh what a feeling!

All Toyota Genuine Accessories purchased and fitted to a Toyota are warranted for the remainder of the New Vehicle Warranty or 12 months, whichever is greater. Toyota Genuine Accessories purchased from an authorised Toyota Dealer over the counter are warranted from the date of purchase for one year. Conditions apply. The Toyota Genuine Accessories Warranty does not limit and may not necessarily exceed your rights under the Competition and Consumer Act 2010. Toyota Genuine Accessories are not applicable to all models/grades. Consider the mass of your load to ensure you will not exceed the maximum allowable individual axle capacity, Gross Vehicle Mass and /or Gross Combined Mass of the vehicle. Refer to the accessories brochure (available from your Toyota salesperson) or visit www.toyota.com.au for details on warranty and to help determine which accessories are suitable for your vehicle. Pictured accessories are sold separately. Accessory colours shown may vary from actual colour due to the printing process.



We believe all kids deserve a fair go.

**Thank you for helping kids who are
sick, disadvantaged or have special
needs to be able to join in with
everyone else.**



CONTACT

Event Manager: Alex Richards

Variety SA: PO Box 1235, Marleston, SA 5033

Phone: (08) 8293 8744

Email: alex@variety.org.au

Facebook: www.facebook.com/varietyamotoring

Twitter: www.twitter.com/variety

www.variety.org.au